

ENERGY ELCOMEM 24 Pulse Counter

Monitoring and calculating costs of KWh, water & gas consumptions

Monitoring consumptions is a matter of concern for more than one energy manager. Much has been said to achieve a solution which is compatible with nowadays' needs and our cost centres' requirements.

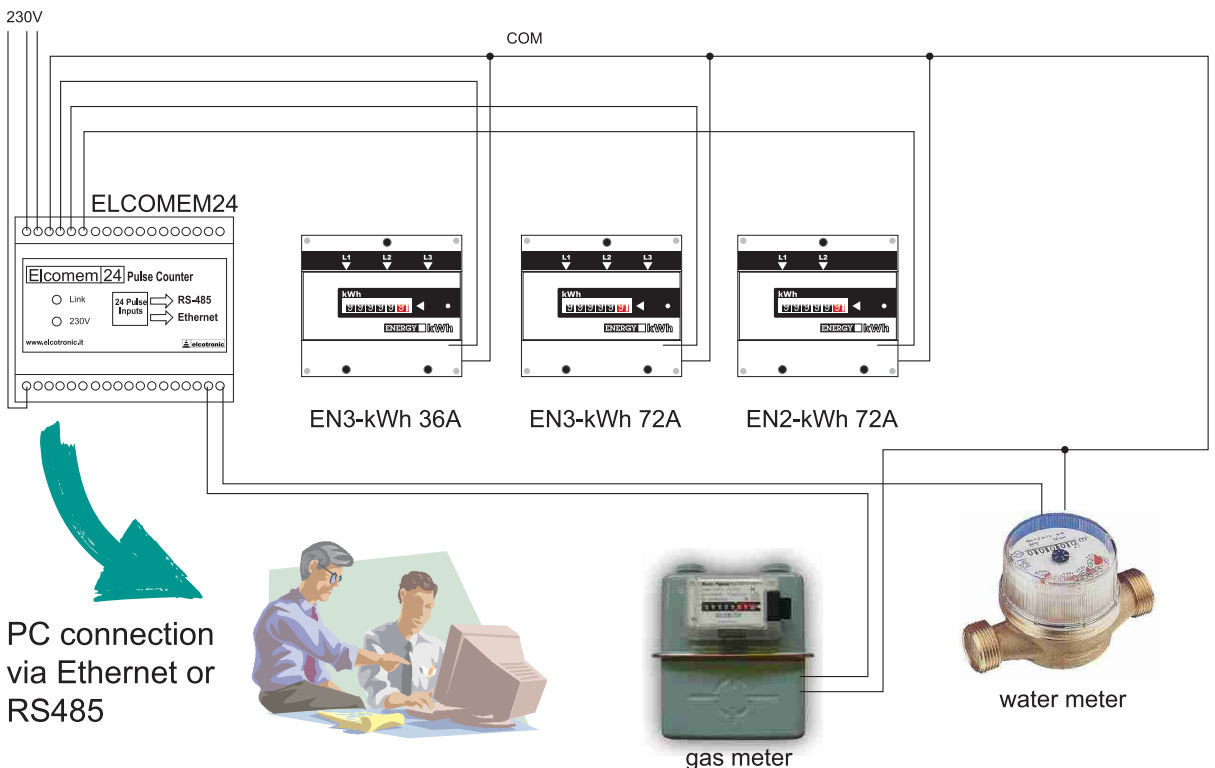
Either single or three-phase 30-72-140-240 Amp. kWh meters provided with a pulse output can be successfully used to keep electrical consumptions under control even in those cases where a great number of users is involved.

Current is measured by using a through cable with internal CTs.

This simple procedure ensures a trouble-free operation. Accuracy is 0.5%: the instrument is calibrated with the internal CTs already assembled, so that any possible measuring error of the current transformer is adjusted through calibration. A pulse counter can be now installed which collects pulses from 24 struments. Data can be then downloaded into a PC with the use of "ELCOMEM24 LT" software.



- Collects the pulses coming from max 24 instruments provided with a pulse output
- PC connection via Ethernet or RS485
- 220/240V - 50/60Hz power supply
- Logs up to 4,000,000,000 pulses



ELCOMEM24 can log and download pulses into a PC, in order to calculate consumptions.

When data is printed, all counts are automatically reset.

After resetting, a new counting sequence starts.

DATE: 11/11/2005 12:59

List of Consumptions & Costs

	date of start	name	consumptions (KWh/m3)	costs (KWh/m3)	total amount
1	11/11/2005 12.53	Antonio KWh	0,000	€ 0,15	€ 0,
2	11/11/2005 10.29	Mario KWh	0,090	€ 0,15	€ 0,01
3	11/11/2005 10.29	Giovanni KWh	0,080	€ 0,15	€ 0,01
4	11/11/2005 10.29		0,000	€ 0,01	€ 0,
5	11/11/2005 10.29		0,000	€ 0,01	€ 0,
6	11/11/2005 10.29		0,090	€ 0,01	€ 0,
7	11/11/2005 10.29		0,000	€ 0,01	€ 0,
8	11/11/2005 10.29	Mario - hot water	0,200	€ 0,40	€ 0,08
9	11/11/2005 10.29	Mario - cold water	0,300	€ 0,30	€ 0,09
10	11/11/2005 10.29		0,000	€ 0,01	€ 0,
11	11/11/2005 10.29		0,000	€ 0,01	€ 0,
12	11/11/2005 10.29		0,000	€ 0,01	€ 0,
13	11/11/2005 10.29		0,000	€ 0,01	€ 0,
14	11/11/2005 10.29		0,000	€ 0,01	€ 0,
15	11/11/2005 10.29	Luca KWh	0,090	€ 0,15	€ 0,01
16	11/11/2005 10.29		0,000	€ 0,01	€ 0,
17	11/11/2005 10.29		0,000	€ 0,01	€ 0,
18	11/11/2005 10.29		0,000	€ 0,01	€ 0,
19	11/11/2005 10.29		0,000	€ 0,01	€ 0,
20	11/11/2005 10.29		0,000	€ 0,01	€ 0,
21	11/11/2005 10.29		0,000	€ 0,01	€ 0,
22	11/11/2005 10.29		0,000	€ 0,01	€ 0,
23	11/11/2005 10.29		0,000	€ 0,01	€ 0,
24	11/11/2005 10.29		0,000	€ 0,01	€ 0,

The above list must be filled in with the names of the different users.

At the same time, the cost to be debited for each pulse must be entered to allow calculations.

When a customer - eg Antonio - is reset, the old date, KWh consumptions and total amount are cleared and a new counting sequence starts.

Ask for the ELCOMEM24 version which monitors consumptions according to time bands!